

SEGA

SEGA CD

ESPN

# NATIONAL HOCKEY NIGHT™



SONY



IMAGESOFT



LICENSED BY SEGA ENTERPRISES, LTD.  
FOR PLAY ON THE SEGA CD™ SYSTEM.





## INTRODUCTION

- The Sega CD Disc is intended for use exclusively with the Sega CD™ System.
- Do not bend it, crush it, or submerge it in liquids.
- Do not leave it in direct sunlight or near a radiator or other source of heat.
- Be sure to take an occasional recess during extended play, to rest yourself and the Sega CD Disc.
- **KEEP YOUR SEGA CD DISC CLEAN.** Always hold by the edges, and keep it in its case when not in use. Clean with a lint-free, soft dry cloth—wiping in straight lines from center to edge. Never use solvents or abrasive cleaners.

### WARNING: READ BEFORE USING YOUR SEGA VIDEO GAME SYSTEM.

A very small percentage of individuals may experience epileptic seizures when exposed to certain light patterns or flashing lights. Exposure to certain patterns or backgrounds on a television screen or while playing video games may induce an epileptic seizure in these individuals. Certain conditions may induce previously undetected epileptic symptoms even in persons who have no history of prior seizures or epilepsy. If you, or anyone in your family has an epileptic condition, consult your physician prior to playing. If you experience any of the following symptoms while playing a video game—dizziness, altered vision, eye or muscle twitches, loss of awareness, disorientation, any involuntary movement or convulsions—**IMMEDIATELY** discontinue use and consult your physician before resuming play.



NHLPA, National Hockey League Players Association and the logo of the NHLPA are registered trademarks of the NHLPA and are used under license, by Sony Electronic Publishing Company.

NHL is a registered trademark of the National Hockey League. Stanley Cup is a registered trademark of the National Hockey League. Team names and logos depicted are Officially Licensed Trademarks of the National Hockey League © NHL, 1994. All NHL and Team logos and other marks depicted are the property of the NHL and the respective teams and may not be reproduced without the prior written consent of NHL Enterprises, Inc. ©1994 NHL.



This product has been rated by the Entertainment Software Rating Board. For information about the ESRB rating, or to comment about the appropriateness of the rating, please contact the ESRB at 1-800-771-3772.



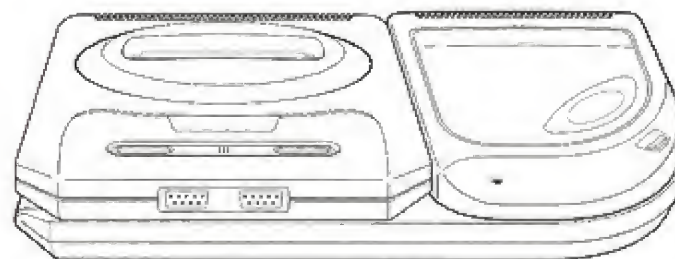
This official seal is your assurance that this product meets the highest quality standards of SEGA®. Buy games and accessories with this seal to be sure that they are compatible with the SEGA™ CD™ SYSTEM.

ESPN National Hockey Night™ is distributed by Sony Imagesoft, 2400 Oranoby Avenue, Suite 250, Santa Monica, CA 90404. Sony is a registered trademark of Sony Corporation. Imagesoft is a trademark of Sony Electronic Publishing Company © 1994 Sony Electronic Publishing Company. ESPN, SportsCenter and National Hockey Night are trademarks of ESPN, Inc. All rights reserved. Licensed in conjunction with Famous International, Inc. and International Computer Group, Inc.

## SET UP



1. For ESPN National Hockey Night, plug the Genesis Control Pad into the "Control 1" port on your Sega Genesis.
2. Make sure that there's no game cartridge in your Sega Genesis System and follow all Sega CD System directions to activate your Sega CD System.
3. If your system is already on, follow all Sega CD System directions to activate your Sega CD System.
4. If your Sega Genesis System is turned off, place the ESPN National Hockey Night game disc in the CD System with the label facing up, close the door and turn on your Sega Genesis System.
5. At the OPTIONS screen, you may select to have music and sound on or off. After making your selections, highlight EXIT and press the START button.



Warning to owners of projection televisions: Still pictures or images may cause permanent picture-tube damage or mark the phosphor of the CRT. Avoid repeated or extended use of video games on large-screen projection televisions.



## BILL CLEMENT AND ESPN WELCOME YOU TO NATIONAL HOCKEY NIGHT



ESPN's National Hockey Night brings you the most dangerous team sport in the world right to your home! Hosted by the impressive Bill Clement, ESPN's National Hockey Night gives you the chance to take any team in the NHL® all the way to the Stanley Cup® finals! Every team from both leagues

is here for you to play or play against!

There are a wide selection of options and playing scenarios that make each game an original experience. Two completely different viewing modes let you to pick the way you want to see the action on the ice! Note that this game allows the use of any 4-player adaptor so that up to 4 people can play at one time! We've also included the latest stats for each team and the updated rules for the next season. All in all, ESPN's National Hockey Night will take average hockey fans and transform them into a master of NHL® strategies, tactics, and team play!

## TABLE OF CONTENTS



Bill Clement, NHL Analyst . . . . .	5-6
Take Control! . . . . .	7
Main Options Screen . . . . .	8
Player Selection Screen . . . . .	9
Bill Clement Screen . . . . .	10
During Game Play . . . . .	11
Challenge Mode . . . . .	12
Exhibition Mode . . . . .	12
Fastest Man . . . . .	13
Shootout . . . . .	13
Season Mode . . . . .	14
Playoff Mode . . . . .	15
Playing Skills . . . . .	16
Penalties . . . . .	17
Line Changes . . . . .	18
Additional Tips . . . . .	19
Credits . . . . .	20
Notes . . . . .	21-25
Warranty Information . . . . .	26



## **BILL CLEMENT NHL ANALYST**



Former National Hockey League All-Star Bill Clement, who played for 11 years in the NHL with Philadelphia, Washington and Calgary, is the game analyst for ESPN's NHL studio analyst.

Clement first served as ESPN's NHL game analyst from 1986 to 1988. From 1988-92, he was the analyst for Philadelphia Flyers games on PRISM (a regional cable service in

Philadelphia) and a playoff analyst, including the Finals, for SportsChannel America. He received the 1992 CableACE Award for his work in playoffs. Since 1988, he has worked Flyers local over-the-air telecasts (WGBS-TV from 1988-91 and WPHL-TV since 1991). He was an ice-level reporter for NBC's coverage of the NHL All-Star Game in 1991 and '92. Clement served as an analyst for TNT at the 1992 Winter Olympics and as the studio analyst for the 1991 Canada Cup on CTV (Canada).

Clement, who served as an analyst for select Madison Square Garden telecasts of New Jersey Devils games, worked as a guest commentator on USA Network's NHL telecasts during his playing career.

## **BILL CLEMENT NHL ANALYST**



Since early 1992, Clement has made motivational speeches for schools and corporations. He is also a trained actor and model who has appeared in more than 50 print and television advertisements, including ones for Chevrolet, Deep Woods Off, Hardees, NAPA, Bell of Pennsylvania, the Metro Energy Council and Pro Hardware. Clement also appeared in the ABC soap opera "All My Children" in July 1986 and industrial films for IBM, Monsanto and Coca-Cola.

The former center began his pro career with the Flyers organization in 1970 and played for two Stanley Cup champions (1974, '75) with the "Broad Street Bullies". After one season (1975-76) with the Capitals in which he played in the All-Star Game, Clement was traded to the Atlanta (now Calgary) Flames in which he played for six seasons, and was selected to this second All-Star Game (1977-78).

Clement is a native of Thurso, Quebec, the same Canadian town that produced Hall of Famer Guy Lafleur. Clement and Lafleur both had streets in their hometown named for them.

Clement, born December 20, 1950, resides in Newtown, Pa. with his wife, Cissie Callahan, and their three children.



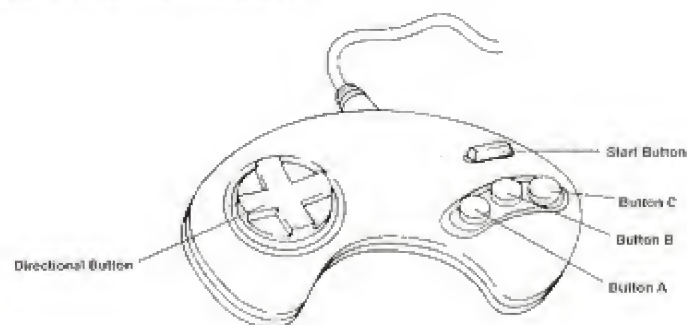
## TAKE CONTROL!

Throughout the manual, the buttons on the Genesis Control Pad will be referred to as follows:

Directional Button (D-Button), Start Button, Button C, Button B, and Button A. Depending on which section of the game you are in, the buttons have different uses. We will describe each screen and the functions for the buttons in each one.

You have a multitude of options awaiting you in the start up and game playing sections of this game. Below you will find a detailed explanation for each decision screen. Please notice, that in most cases, however, the layout is very similar: a decision screen lists major options and they can be scrolled by using the Up and Down arrows. As you scroll, you will see that an option is highlighted. This is the active option. Each specific setting can be scrolled by using the Right or Left arrows. Pressing the Start Button selects all of the options currently listed and then returns you to the next screen.

First, press the Start Button five times to go through the logo and license screens. You will then be at the Main Options Screen.



## MAIN OPTIONS SCREEN



Press Right or Left on the D-Button to move between "Options" and "Game."

Press Up or Down on the D-Button to move between "Game" and "Controls."

Press the Start Button to select either "Options", "Game", or "Controls."

You can choose levels of difficulty—Beginner, Amateur or Pro levels.

### OPTIONS:

Play Mode: Exhibition, Challenge, Playoffs, Season.

View: Side View, Vertical View.

Rules: Offsides Off, Penalties Off, Penalties On.

Game Length: 5 Min. Period, 10 Min. Period, 20 Min. Period.

Line Changes: Changes On, Changes Off.

Video Frequency: Off, Infrequent and Frequent.

Difficulty Setting: Beginner, Amateur, Pro.

### CONTROLS:

Use Button C to select Offense or Defense.

Left or Right rotates between control settings.

Start Button selects all settings and returns to the Main Options Screens.

### GAME:

Left or Right moves between Home or Visitors.

Up or Down scrolls through the team selection choices.

Start button selects the teams and brings you to the Player Selection Screen.





## PLAYER SELECTION SCREEN

This screen is both the Team Selection screen and the Player selection screen. Select the teams you want to choose, then choose the players.

Use the Left or Right arrows to move a player to Visitors or home. Players left in the middle will be run by the computer.

Press the Start Button to advance to the Bill Clement Screen.

If in the Playoffs: To scroll between Resume Game or New Game, press the Start Button to select and move to team select.

You may also choose between "Best of 7" or "Best of 1" to indicate how long you want each series to be.

Playoff Tree: Press Left or Right to pan playoff tree. Press the Start Button to move to Player Selection (see above).



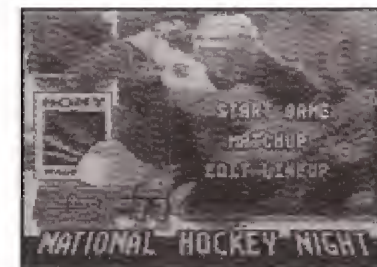
## PRE-GAME SCREEN



Use the Start Button to select the highlighted choice.

Start Game: Press the Start Button here to begin playing the game.

Match Up: Use Up or Down to scroll through the numbers. The Start Button returns you to Bill Clement.



Edit Lineup: Use Up or Down to scroll through the players. Use Left or Right to see each players stats. Press Button C to switch teams. Press Button A to see reserves at that position. Go left and right to view the different lines in the game.

Reserves: Use Up or Down to scroll through reserves. Use Left or Right to see each reserves' stats. Use the Start Button to select reserve and return to Edit Screen.

Press Start Button to return to Bill Clement Screen.



## DURING GAME PLAY

Buttons A, B, and C perform the following actions, depending on how the "Controls" are set (see above):



	A	B	C
Offense	Flip	Pass	Shoot
Defense	Hold	Poke	Speed
Offense	Shoot	Flip	Pass
Defense	Speed	Hold	Poke
Offense	Pass	Shoot	Flip
Defense	Poke	Speed	Hold

The D-Button moves players in every direction—Up, Down, Left, and Right.

The A Button also is the Line Change Button.

The Start Button pauses the game and brings you to the Clement Game Screen.

Clement Game Screen: Several choices are offered to you when you are in this screen. They are:

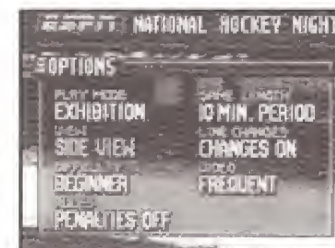
Resume Game:	Go back to playing.
Edit Lineup:	As before.
View:	Use the Start Button to switch game view.
Statistics:	Left or Right for current game, current period. Up or Down to scroll through stats.

Press the Start Button to return to the Clement Game Screen.

## CHALLENGE MODE



From the Main Options Screen, then the Player Selection screen comes the Challenge Mode. Use Left or Right to move between Home and Visitors. Press Up or Down to scroll through the team selection choices. The Start Button selects the teams and brings you to the Clement Challenge Screen.



There are two forms of challenges: The Fastest Man and the Shootout. These are offered to hone your playing skills and to allow you to get a better feel for the gaming dynamics.



## EXHIBITION MODE

This mode allows the players to choose any two teams to play against each other for one game. This is the most common option chosen.



## FASTEST MAN

The Fastest Man Contest is a race around the ice to see who can get the fastest time. Quickly and alternately press between Buttons A and B, and use the D-Button to move around the ice. See who can get the best time. Up to four people can play. You may choose two teams to play, and each controlling player gets to play one person.



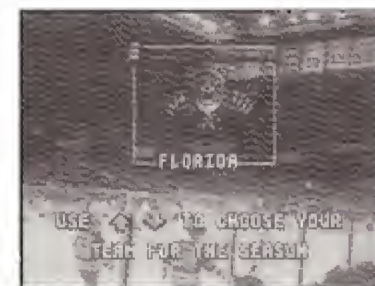
## SHOOTOUT

The Shootout is a test of your shooting ability. Use Button C to shoot, and aim the puck by using the D-Button. Shoot as quickly and as accurately as you can! Five players from each team compete to see who can get the highest scoring percentage.

## SEASON MODE



This is one of the finest features of the game. Upon selecting Season Mode on the Options Screen, the player gets to choose which team he wants to play for an entire season! If you select the San Jose Sharks, for instance, you can play them (or any of their opponents during the season!). You may choose to play a new season (which erases the battery back-up), or resume if you already have a season in progress.



When the Season Calendar comes up, you may use the D-Button to move the month around. Press Button C once you have selected the month you want. This brings up a yellow highlight cursor which you use to pick the game day you want. The beauty of the Season mode is that you can choose any point in the season you want (only moving in a forward direction), and you will go to that game, and the computer will simulate (based on many attributes), how your team did in the games in-between the game you last played and this one. This means that you can potentially play one game out of every month and the computer will play the others for you!

When the Bill Clement Screen comes back up, Season Mode gives you the additional menu option of "Standings." This screen shows you the current NHL standings in both the Eastern and Western conferences.

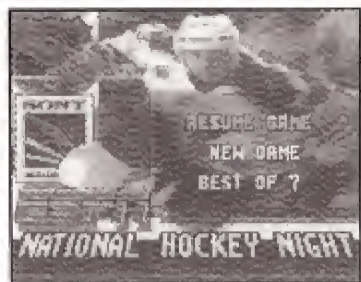
Upon completion of any Season, if you have Ranked high enough, you will move on to the Stanley Cup playoffs.





## PLAYOFF MODE

You can begin this game already at the playoffs for the Stanley Cup. This mode allows you to select from either the Best of 1 or the Best of 7. Choose your team (as shown above) and the stats for the playoffs will appear. You now face the best teams in the NHL, and they are all gunning for you! Take your team (and teammates) through this gauntlet of challengers and come out as the world champions!



## PLAYING SKILLS



**Skating** - Use the D-Button to control the direction of the player.

**Shooting** - Wrist Shots are performed by pressing the "Shoot" button quickly and releasing it. Slap Shots are performed by a long press and release of the Shoot button. Aiming is determined by the direction of the D-Button when the Shoot button is released.

**Passing** - Press your Pass button to pass the puck to your nearest teammate in the direction you are facing. If you do not have a teammate in a 60° wedge (centered on the D-Button direction chosen), then the puck sails off to nobody. As soon as the puck is passed, control switches to the player it is passed to. If the pass goes to nobody, then the player that passed it remains in control.

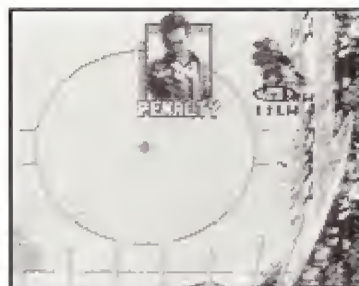
**Speed Burst** - There is an option for the players to perform speed bursts, provided they are fairly fresh in the game. Players tire quickly when they do a speed burst, so this will affect them when you consider making line changes. Players are limited to the amount of speed bursts that they can perform during the game.

**Stick Checking** - To stick check an opponent, simply skate into him and press your Poke button. The force of the collision may result in your opponent not only losing the puck, but also his balance. This move only happens when you are initially skating backwards in front of the offensive player while you are defense.



## PENALTIES

You can select whether or not you want to have penalties assessed during the game as one of the earlier options. We have set Off Sides as a separate On/Off function from the rest of the penalties because it is the most common (and most annoying) of the penalties. Play a few games without the penalty function on to get a feel for NHL style hockey, but when you turn the Ref's back on, you'll really have to watch the way you play! Remember, Power Plays can only happen if somebody is cooling their heels in the penalty box!



Other common penalties:

**Icing** - Icing is when a player shoots the puck from beyond center ice to the back of the rink. It is tested first by an opposing player (but not the goalie). The program defaults to having the Icing penalty on.

**Cross Checking** - This illegal check usually ends with the checker getting a penalty. This maneuver is performed by holding the hockey stick with both hands and checking the opponent with the stick in the middle. This is an illegal move because it tends to cause injuries to the recipient.

**Charging** - This is when a player takes more than a few strides towards an opponent in order to deliver a body check.

## LINE CHANGES



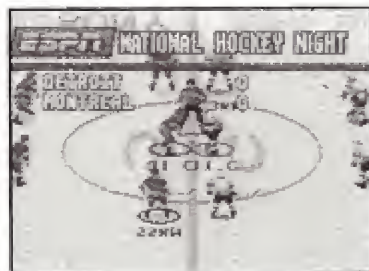
Timely Line Changes are imperative to a winning hockey strategy. There are gauges in the stats of each player to determine their fatigue factors. Use these to determine the best time to pull them out of the game (and rest up) while substituting a fresh player. You can make Line Changes any time during the game. Hold down Button A to start a line change. The line change dialogue box will come up on all play stoppages. If this function is set at automatic, the computer will monitor the players and make the Line Changes for you. If you think you have a handle on this, set it for manual and keep an eye on the stats!

#LINE 1					
C	91	ICE	S	FEDEROU	13 15
LW	13	ICE	S	KOZLOV	10 15
RW	27	ICE	M	RIURZOFF	8 15
LD	5	ICE	N	LIDSTROM	10 15
RD	8	ICE	S	CHRASSON	10 15
G	35	ICE	B	ESSENH	11 15

DETROIT		MONTREAL	
BILL CLEMENT'S PICKS			
13	SKATING	14	
13	PASSING	5	
0	DEFENSE	2	
10	GOAL TENDING	15	
10	SPECIAL YEARS	10	

## ADDITIONAL TIPS

- The game saves all of your last choices to the battery. This means that if the last time you boot ed up the game it was in Exhibition mode, with the Penalties Off, Playing Hartford against the Mighty Ducks; that will be how it is when you boot it up again.
- Remember, there are 2 views in this game. Check them both out to see which one you prefer.
- The "Exit Game" option which appears after any game has been played, resets the game.



This game can support up to four players at a time using the team player adaptor. For further details, please refer to your Team Player instruction manual.

## CREDITS



Programming:  
Eric Hagstrom  
Craig Broadbooks  
Paula Willman  
Scott Murray

Lead Artist:  
David Estus

Artists:  
Andy Jaros  
Steve Mitchell  
Ted Robertson  
Scott Rogers  
Brian O'Hara  
Katy Roe  
Dave Fenderson  
Chris Meland  
Joe Brisbois  
Kevin Toft

Additional Art:  
Paul Willman  
Craig Broadbooks

Producers:  
John Smedley

Associate Producer:  
Greg Oberle

Assistant Producer:  
Dennis Quinn

Sound and Music:  
Joe Hight  
Rex Baca

Testing Coordinator:  
Brian Wiklem

Testing:  
Dennis Quinn  
Greg Kaine  
Fred Wigand  
Justin Busch  
Robert Baumsteiger  
Martha Williams  
Jody Kelsey  
Kurt Schwengel  
Bruce Cochrane  
C J Connoy  
Andre Leighton  
Seth Luisi  
Jose Cruz  
Tobin Russell

Sony Executive  
Producer:  
Richard Robinson

Executive Producers:  
Steve Bornstein  
Ed Durso  
Dick Glover  
Tom Hagopian  
Jim Noel  
John Wildack  
Howie Schwab

Special Thanks To:  
Andy Zaffron  
Bill Clement





# NOTES

---



---



---



---



---



---



---



---



---



---



---



---



---



---



---



---



---



---



---



---



---



---



---



---



---

# NOTES




---



---



---



---



---



---



---



---



---



---



---



---



---



---



---



---



---



---



---



---



---



---



---



---

## NOTES

---

---

---

---

---

---

---

---

---

---

---

---

---

---

---

---

---

---

---

---

---

---

---

---

## WARRANTY INFORMATION

### LIMITED WARRANTY SONY IMAGESOFT WARRANTY

Sony Imagesoft warrants to the original purchaser of this Sony Imagesoft product that this CD is free from defects in material and workmanship for a period of ninety (90) days from the date of purchase. This Sony Imagesoft product is sold "as is," without expressed or implied warranty of any kind, and Sony Imagesoft is not liable for any losses or damages of any kind resulting from the use of this product. Sony Imagesoft agrees for a period of ninety (90) days to either repair or replace, at its option, free of charge, the Sony Imagesoft product. Send product postage paid, along with dated proof of purchase, to the address shown below.

This warranty shall not be applicable and shall be void if the defect in the Sony Imagesoft product has arisen through abuse, unreasonable use, mistreatment or neglect. This warranty is in lieu of all other warranties and no other representations or claims of any nature shall be binding on or obligate Sony Imagesoft. Any implied warranties applicable to this software product, including warranties of merchantability and fitness for a particular purpose, are limited to the ninety (90) day period described above. In no event will Sony Imagesoft be liable for incidental or consequential damages resulting from possession, use or malfunction of the Sony Imagesoft software product.

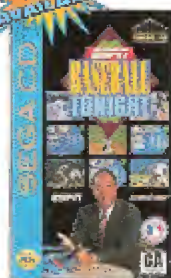
Some states do not allow limitations as to how long an implied warranty lasts and/or exclusions of liability may not apply to you. This warranty gives you specific legal rights, and you may also have other rights which vary from state to state.

Customer Service:  
(310) 449-2393

Patents: U.S. #'s 4,442,486/4,464,594/4,462,078; Europe # 80244; Canada #'s 1,183-278/1,002,351;  
Hong Kong # 88-4302; Germany # 2,609,629; Singapore # 88-155; U.K. # 1,535,999; France #  
1,607,829; Japan # 1,632,386.

## Look for these other great ESPN titles for the Sega CD!

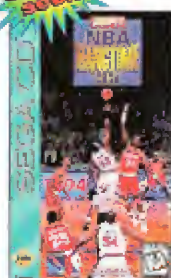
**NOW  
AVAILABLE**



- Choose from all 28 Major League teams and stadiums
- Over 10 minutes of video highlights
- Full season league competition, plus American and National League LCS and World Series



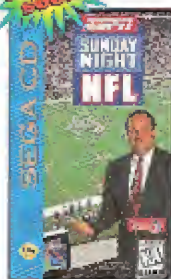
**Coming  
Soon**



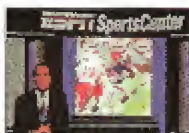
- Choose from 81 of the hottest players in the NBA from all 27 teams
- Take it to the hoop with the likes of Hakeem Olajuwon, Patrick Ewing, Shawn Kemp and Karl Malone
- Exclusive streetball mode featuring 12 outdoor venues from around the world



**Coming  
Soon**



- Compete with all 28 NFL teams in League Play, Playoffs and Super Bowl
- First time ever full field perspective from one end zone to the other
- Extensive play-by-play commentary and video highlights from ESPN's Chris Berman and Mike Patrick



LICENSED BY SEGA ENTERPRISES, LTD. FOR PLAY ON THE SEGA CD™ SYSTEM.

SEGA AND SEGA CD ARE TRADEMARKS OF SEGA ENTERPRISES, LTD.  
ALL RIGHTS RESERVED.

ESPN National Hockey Night™ is distributed by Sony Imagesoft, 2400 Broadway, Suite 550, Santa Monica, CA 90404. Sony is a registered trademark of Sony Corporation. Imagesoft and the Quill Design logo are trademarks of Sony Electronic Publishing Company © 1994 Sony Electronic Publishing Company. All rights reserved. ESPN, SportsCenter, and ESPN National Hockey Night are trademarks of ESPN, Inc. All rights reserved. Licensed in conjunction with Names International, Inc. and International Computer Group, Inc.

Manufactured in the U.S.A.